



ONECLICK CONECTOR

AR-FC-ONE-SC-APC

Following All Safety Precautions

Before any operation, read the instructions and precautions in this document carefully to minimize the possibility of accidents. The Danger, Caution, and Note items in the documents do not cover all the safety precautions that must be followed. They only provide the generic safety precautions for operations. When operating ARTIC products and equipment, you must comply with safety precautions and special safety instructions related to corresponding equipment provided by ARTIC. The safety precautions in the document are related to only ARTIC products. ARTIC is not liable for any consequence that results from the violation of universal regulations for safety operations and safety codes on design, production, and equipment use.

Complying with the Local Safety Regulations

When operating the device, comply with the local safety regulations.

Qualified Personnel Only

The personnel in charge of installation and maintenance must be trained and master the correct operating methods and safety precautions before beginning work.

Symbols



CAUTION

Indicates a potentially hazardous situation, which if not avoided, could result in equipment damage, data loss, performance degradation, or unexpected results.



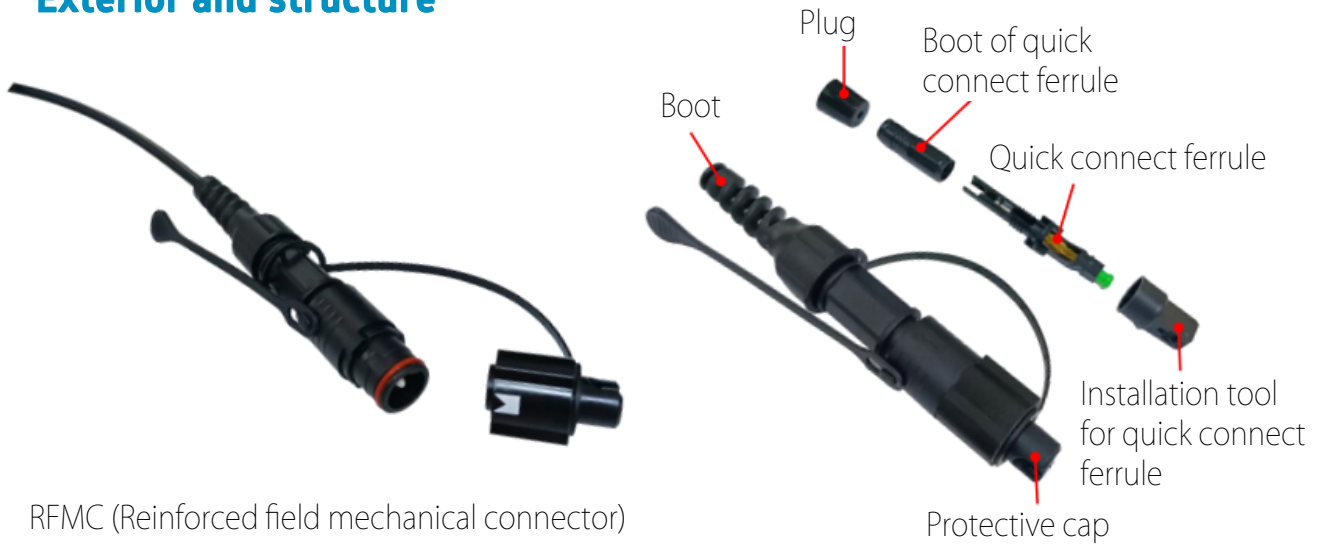
NOTE

Provides additional information to emphasize or supplement important points of the main text.

Safety of Personnel

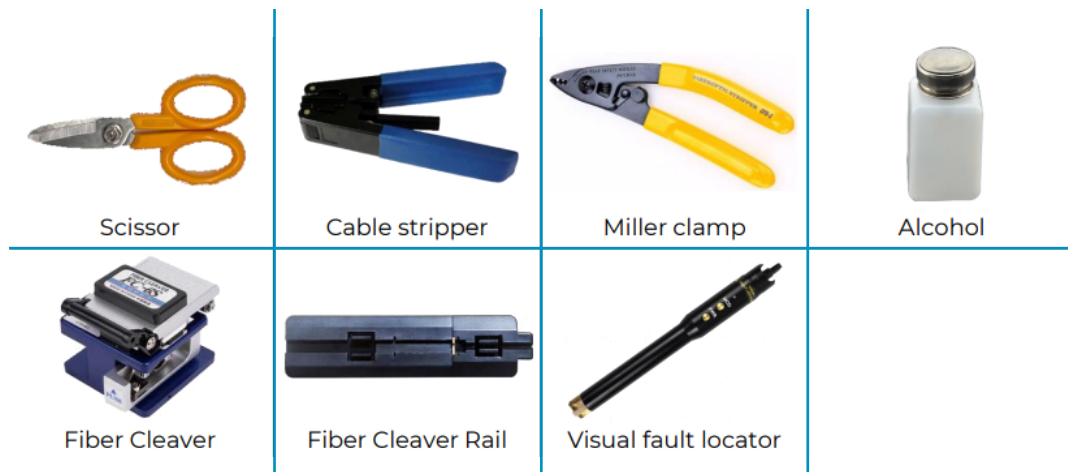
When handling optical fibers, do not stand close to, or look into the optical fiber outlet with unaided eyes. Protect yourself when drilling holes. Flying dust may hurt your eyes or you may inhale the dust. When working at a height, be cautious about falling objects.

Exterior and structure



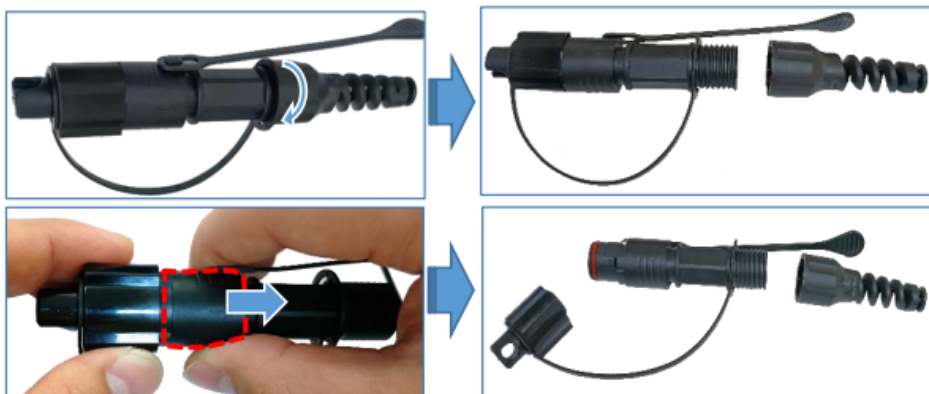
RFMC (Reinforced field mechanical connector)

Installation tools

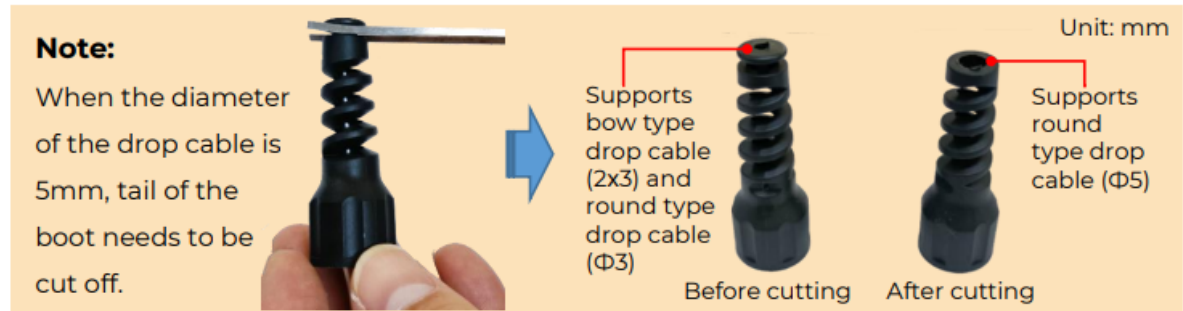
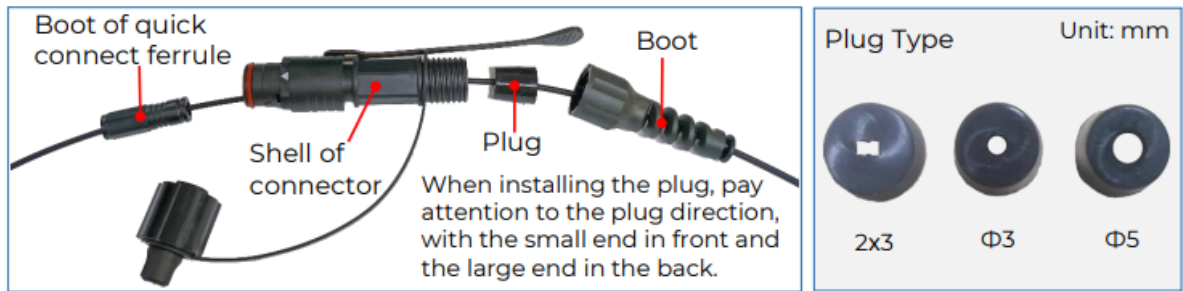


Assemble the RFMC

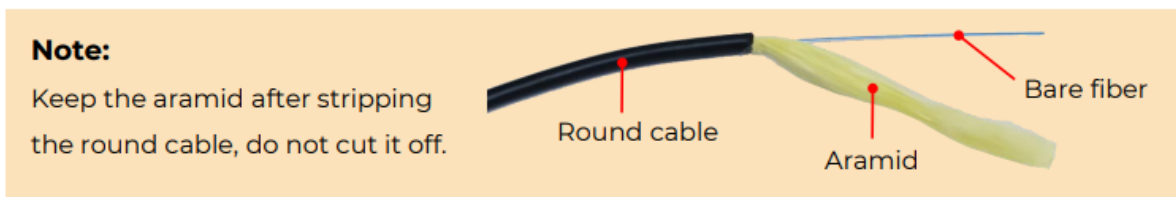
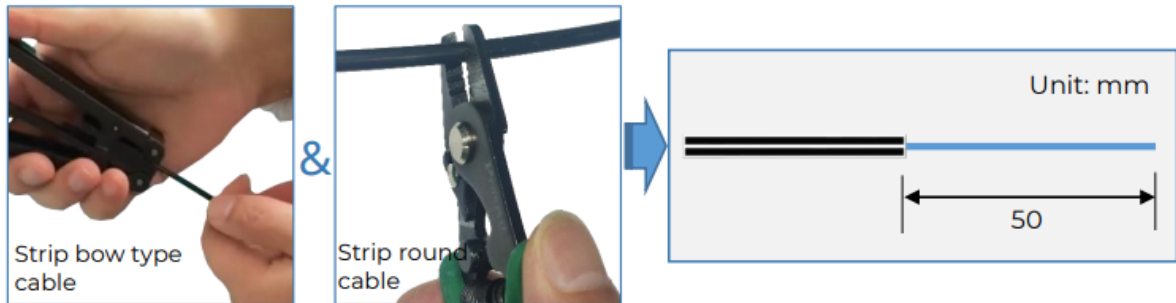
Step 1 Remove the boot and protective cap.



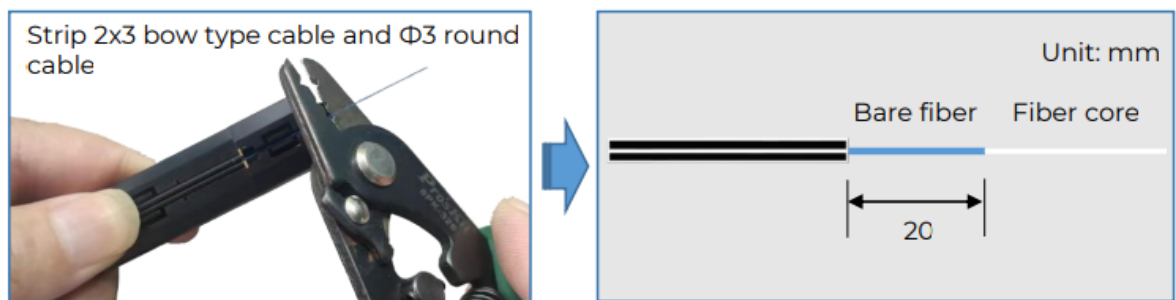
Step 2 Pass the drop cable through the boot, plug, the shell of connector and the boot of quick connect ferrule in turn



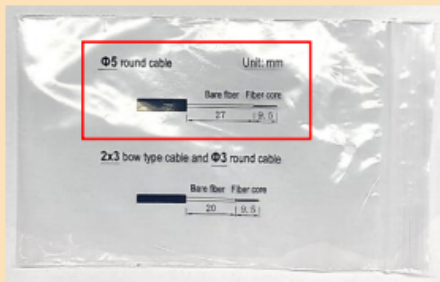
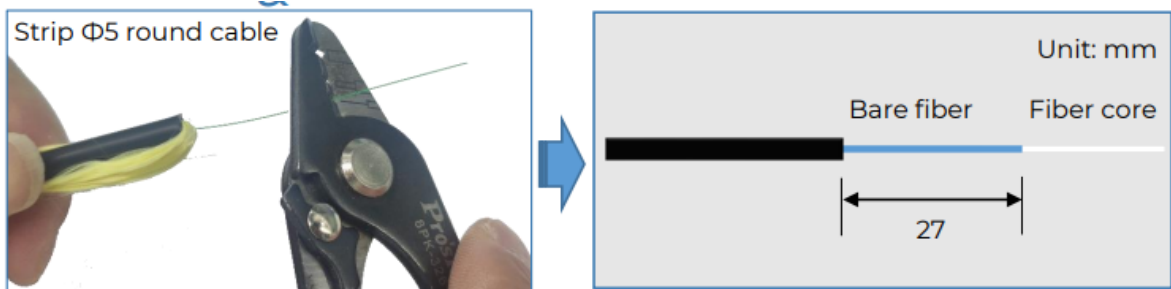
Step 3 Strip the drop cable to the bare fiber



Step 4 Strip the bare fiber to fiber core and clean the fiber core.



Step 5 Cut the drop cable with fiber cleaver.



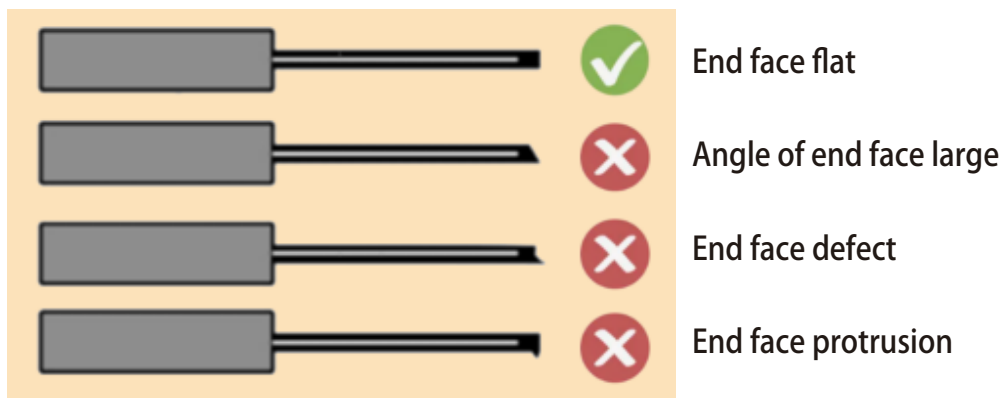
NOTE:

The stripping length of the Ø5mm round cable can refer to the 1:1 size on the package, as shown on the left figure.

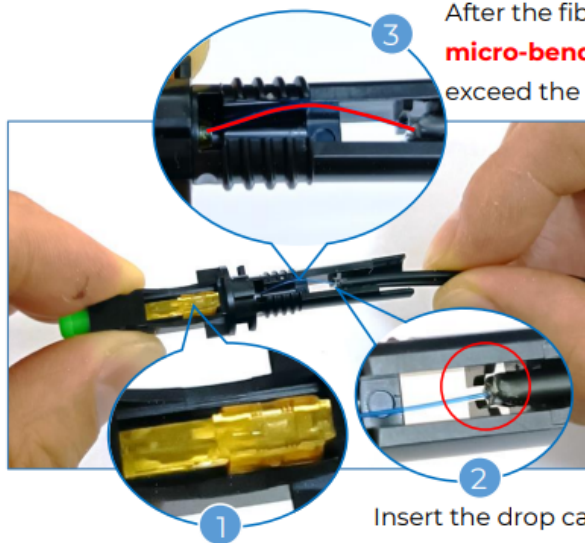
NOTE:

The operation of fiber cutting is very important, and the cutting effect of the fiber end face directly affects the insertion loss of the fiber connector.

1. Before fiber cutting, the precautions are as follows.
 - Adjust the blade height of the cleaver.
 - Clean the blade of the cleaver.
 - Clean the fiber clamp block of the cleaver.
 - The fiber is perpendicular to the blade of the cleaver.
2. The blade of fiber cleaver has a limited number of uses.
3. The quality reference of fiber cutting end face is as follows.



Step 6 Insert the fiber horizontally into quick connect ferrule until the limit piece.



After the fiber is inserted, **keep a certain arc of micro-bend** in the quick connect ferrule, but do not exceed the ferrule shell.

CAUTION:

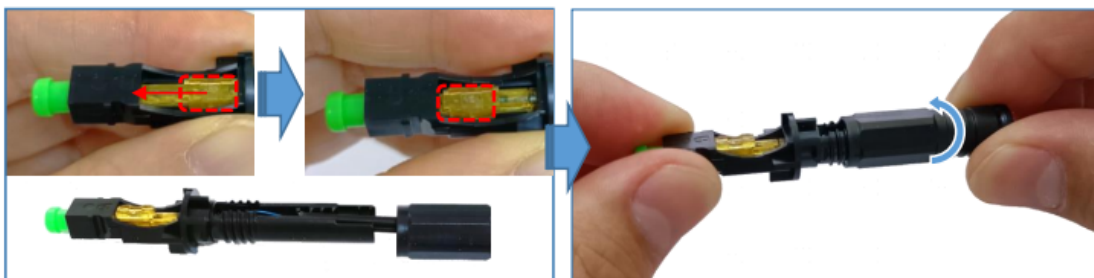
Keep the fiber micro bending all ways, don't release the micro bending any time. Otherwise, the optical performance may be severely degraded.

When the fiber is inserted, make sure that the yellow slider is on the far right.

Insert the drop cable until the limit piece.

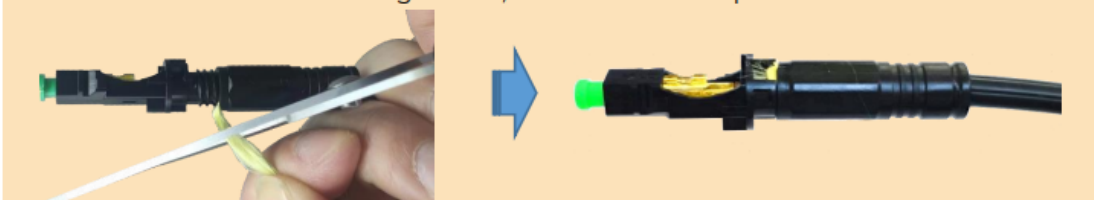


Step 7 Move the slider to the left to fix the fiber core and tighten the boot of quick connect ferrule



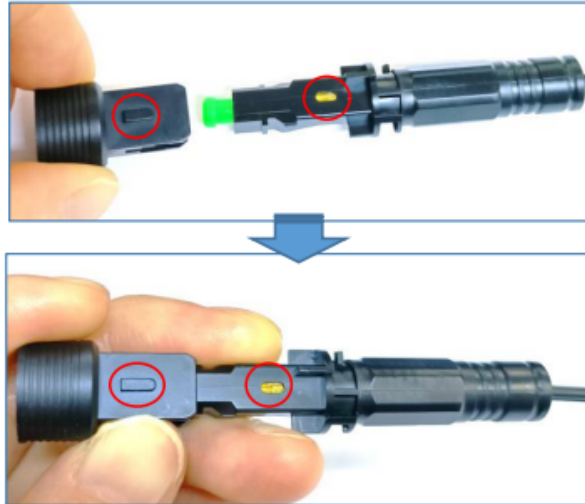
Note:

For round cables, a suitable amount of aramid needs to be reserved for boot tightening. For Φ3 round cable, all aramid are reserved, while for Φ5 round cable, half of the aramid are reserved. After the boot is tightened, cut off the excess part of aramid.



Step 8 Use the tool to install the quick connect ferrule into the shell of connector

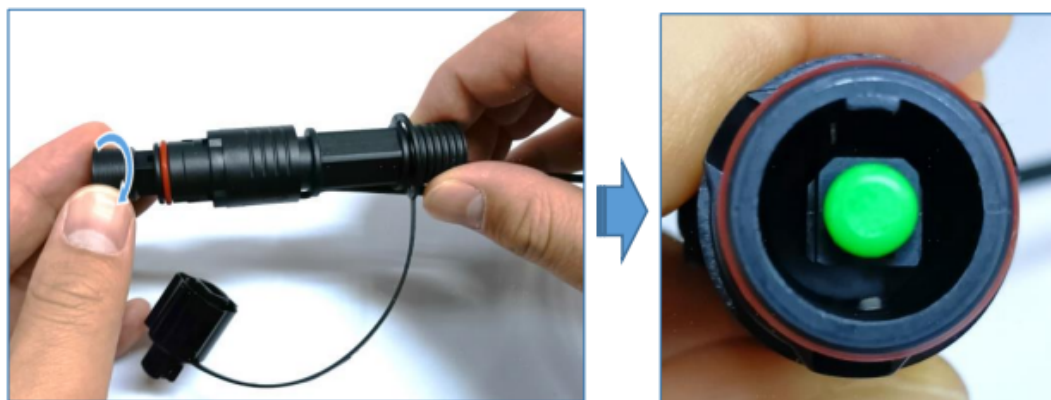
1. Insert the tool to the quick connect ferrule.



2. Place the bulge on the shell of connector on the underside of the notch of the quick connect ferrule and push the quick connect ferrule into the bottom of the shell of connector.

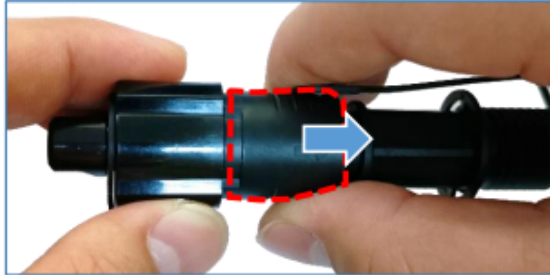


3. Rotate the quick connect ferrule clockwise. When you hear a click, the assembly is complete.



Step 11 (Optional) If the RFMC is not assembled successfully, disassemble it according to the following steps.

1. Remove the protective cap.



2. Loosen the boot



Step 11 (Optional) If the RFMC is not assembled successfully, disassemble it according to the following steps.

3. Insert the tool to the quick connect ferrule. Rotate the quick connect ferrule counterclockwise until you hear a click.



4. Gently push the drop cable forward on the connector tail to push the quick connect ferrule out of the shell of connector.



5. Loosen the boot of quick connect ferrule and move the slider to the right.



6. Remove the quick connect ferrule.



7. Repeat steps 3-10 to assemble the RFMC.

NO.	Check Items
1	Make sure the components of the connector are in place.
2	Check the fiber connectivity with a visual fault locator